

TABLE OF CONTENTS

INTRODUCTION	4
ARE YOU SLEEPING (Instructions)	10
ARE YOU SLEEPING	11
GO TELL AUNT RHODY (Instructions)	12
GO TELL AUNT RHODY	13
LONDON BRIDGE (Instructions)	14
LONDON BRIDGE	15
LARGO (Instructions)	16
LARGO	17
FARMER IN THE DELL (Instructions)	18
FARMER IN THE DELL	19
ADD A THIRD (Instructions)	20
ADD A THIRD	21
LONG, LONG AGO (Instructions)	22
LONG, LONG AGO	23
BARCAROLLE (Instructions)	24
BARCAROLLE	25
TISKET A TASKET (Instructions)	26
TISKET A TASKET	27
MULBERRY BUSH (Instructions)	28
MULBERRY BUSH	29

YOUR FIRST CHORD (Instructions)	30
YOUR FIRST CHORD	31
DREAMING (Instructions)	32
DREAMING	33
CHOPSTICKS (Instructions)	34
CHOPSTICKS	35
MARIANNE (Instructions)	36
MARIANNE	37
HICKERY DICKORY DOCK (Instructions)	38
HICKERY DICKORY DOCK	39
ALOUETTE (Instructions)	40
ALOUETTE	41
AU CLAIR DE LA LUNE (Instructions)	42
AU CLAIR DE LA LUNE	43
MARY HAD A LITTLE LAMB (Instructions)	44
MARY HAD A LITTLE LAMB	45
LOOP DE LOOP (Instructions)	46
LOOP DE LOOP	47
NOW I'M DONE (Instructions)	48
NOW I'M DONE	49
LEVEL 1 REVIEW	50
LEVEL 1 SUMMARY	54

ARE YOU SLEEPING

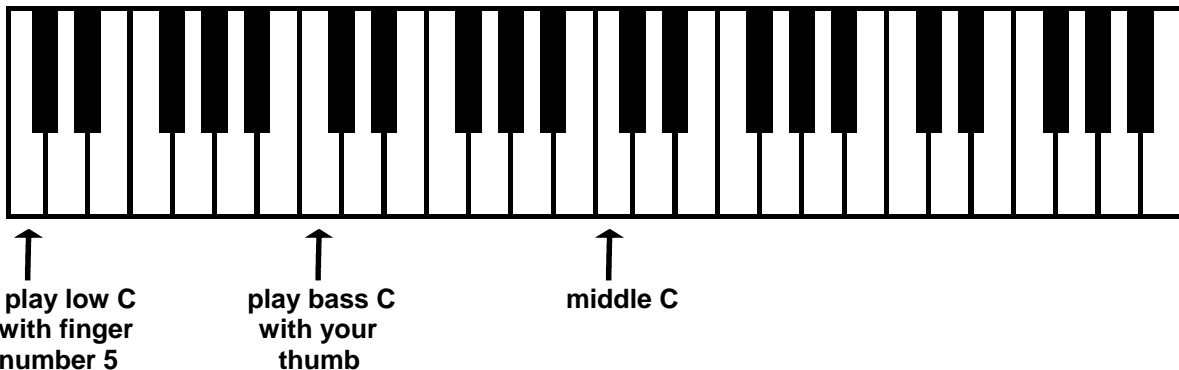
(♩ = 128)

RIGHT HAND - play the melody as written.

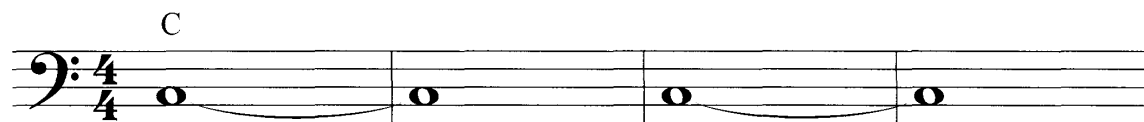
LEFT HAND - root note bassline

Basslines are the lowest notes in an arrangement. A bassline can be created by playing the root note of a chord in various rhythm patterns. Find the root note by looking at the letter name of the chord symbol. C is the root note of the C chord. Root notes sound best when played between bass C (the C one octave below middle C) and low C (the C two octaves below middle C). This will be called the bass area for the rest of this book.

Locate the two C notes you will use to play the root bassline.

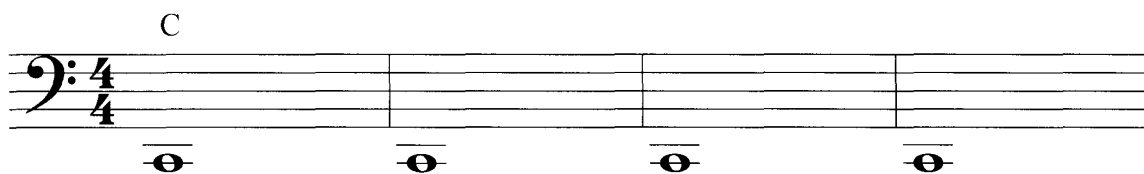


On the first two lines use bass C. Play this root bass note on the first beat of measure one. Hold the note down for two measures. Then pick it up and play it again. Repeat every two measures.



(LH - LINES 1 and 2)

On the last two lines use low C. Play this root bass note on the first beat of every measure. Hold the note down through the measure. Then pick it up and play it again on the next measure.



(C)
(LH - LINES 3 and 4)

ARE YOU SLEEPING

C
1

Are you sleep - ing, are you sleep - ing, broth - er John, broth - er John,

bells are ring - ing, bells are ring - ing, ding, ding, ding, dong.

Are you sleep - ing, are you sleep - ing, broth - er John, broth - er John,

bells are ring - ing, bells are ring - ing, ding, ding, ding, dong.

GO TELL AUNT RHODY

(♩ = 128)

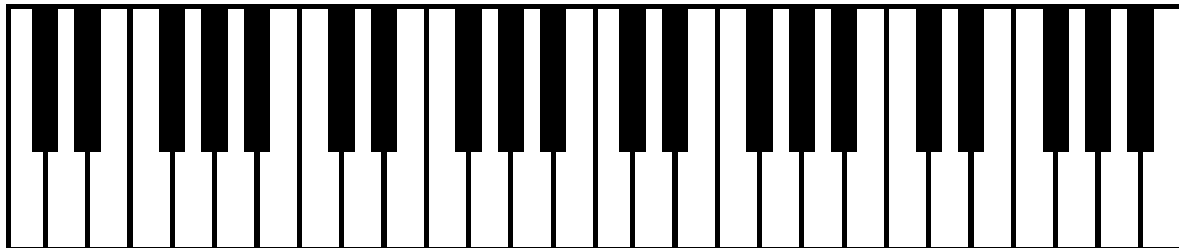
RIGHT HAND – change octaves

To create a variation in a song, especially when there is a second verse, the melody can be played up or down one or two octaves. Melody notes do not need to be played exactly as written. Choose the location on the keyboard based on the desired sound.

Play the melody as written for the first two lines of the song. Then play the melody one octave higher than written for the last two lines of the song.

LEFT HAND – root note bassline

Locate the C and G notes in the bass area. G is the root note of the G chord.



↑ play this C with finger number 5 ↑ play this G with your thumb ↑ middle C

Play the root bass note C on the first beat of measure one. Hold the note down for two measures. On measure three, change to the root bass note G. On measure four, change back to the root bass note C, etc. Hold each root note until the next chord change.

(LH - LINE 1) (C) (G) (CONTINUE HOLDING THIS C NOTE THRU MEASURES 1 AND 2 OF THE NEXT LINE)

GO TELL AUNT RHODY

C
3

4
4

Go tell Aunt Rho - dy,

G

go tell Aunt Rho - dy,

C

go tell Aunt Rho - dy,

G

go tell Aunt Rho - dy, the

C

old gray goose is dead.

3

One she's been sav - ing,

G

one she's been sav - ing,

C

one she's been sav - ing,

G

one she's been sav - ing to

C

make a feath - er bed.

FARMER IN THE DELL

(♩ = 148)

CREATE YOUR OWN ARRANGEMENT

INTRODUCTION

- Choose the number of measures for your introduction:
 - The last four measures.
 - The last eight measures.
- Decide where to play the right hand:
 - As written.
 - One octave lower.
 - Two octaves lower.
- Play the introduction with the right hand only.

RIGHT HAND

- Play the melody as written.

LEFT HAND

- For the first two lines, choose one of these basslines:
 - Play the root note of the chord (in the bass area) on every measure, holding each root note down through the measure.
 - Play the root note of the chord (in the bass area) every two measures, holding each root note down through the two measures.
- For the second two lines, choose one of these basslines:
 - Play the root note of the chord (in the bass area) following the same rhythm as the melody notes.
 - Play the root note of the chord (in the bass area), holding each root note down until the next chord change.
- Notes: Use low C instead of bass C for a better sounding bassline. At the end of measure 8, pick up the root note C and play it again on measure 9.

FARMER IN THE DELL

C
1

Farm - er in the dell, - the

farm - er in the dell, -

5

heigh ho, the der - ry oh, the

3 G C

farm - er in the dell.