

# TABLE OF CONTENTS

<b>SIPPING CIDER THROUGH A STRAW (Instructions)</b> .....	<b>4</b>
<b>SIPPING CIDER THROUGH A STRAW</b> .....	<b>5</b>
<b>BEAUTIFUL BROWN EYES (Instructions)</b> .....	<b>6</b>
<b>BEAUTIFUL BROWN EYES</b> .....	<b>7</b>
<b>TOM DOOLEY (Instructions)</b> .....	<b>8</b>
<b>TOM DOOLEY</b> .....	<b>9</b>
<b>LUCIA POLKA (Instructions)</b> .....	<b>10</b>
<b>LUCIA POLKA</b> .....	<b>11</b>
<b>SHOO FLY, DON'T BOTHER ME (Instructions)</b> .....	<b>12</b>
<b>SHOO FLY, DON'T BOTHER ME</b> .....	<b>13</b>
<b>LAVENDER'S BLUE (Instructions)</b> .....	<b>14</b>
<b>LAVENDER'S BLUE</b> .....	<b>15</b>
<b>COWBOY BLUES (Instructions)</b> .....	<b>16</b>
<b>COWBOY BLUES</b> .....	<b>17</b>
<b>CAMPTOWN RACES (Instructions)</b> .....	<b>18</b>
<b>CAMPTOWN RACES</b> .....	<b>19</b>
<b>SKATERS WALTZ (Instructions)</b> .....	<b>20</b>
<b>SKATERS WALTZ</b> .....	<b>21</b>
<b>HAIL, HAIL, THE GANG'S ALL HERE (Instructions)</b> .....	<b>22</b>
<b>HAIL, HAIL, THE GANG'S ALL HERE</b> .....	<b>23</b>
<b>OVER THE RIVER AND THROUGH THE WOODS (Instructions)</b> .....	<b>24</b>
<b>OVER THE RIVER AND THROUGH THE WOODS</b> .....	<b>25</b>

<b>LA DONNA E MOBILE (Instructions)</b> .....	<b>26</b>
<b>LA DONNA E MOBILE</b> .....	<b>27</b>
<b>MOONLIGHT BAY (Instructions)</b> .....	<b>28</b>
<b>MOONLIGHT BAY</b> .....	<b>29</b>
<b>DANCE OF THE HOURS (Instructions)</b> .....	<b>30</b>
<b>DANCE OF THE HOURS</b> .....	<b>31</b>
<b>LIEBESTRAUM (Instructions)</b> .....	<b>32</b>
<b>LIEBESTRAUM</b> .....	<b>33</b>
<b>JULIDA POLKA (Instructions)</b> .....	<b>34</b>
<b>JULIDA POLKA</b> .....	<b>35</b>
<b>COUNTRY GARDENS (Instructions)</b> .....	<b>36</b>
<b>COUNTRY GARDENS</b> .....	<b>37</b>
<b>THE MAN ON THE FLYING TRAPEZE (Instructions)</b> .....	<b>38</b>
<b>THE MAN ON THE FLYING TRAPEZE</b> .....	<b>39</b>
<b>SHE'LL BE COMIN' 'ROUND THE MOUNTAIN (Instructions)</b> .....	<b>40</b>
<b>SHE'LL BE COMIN' 'ROUND THE MOUNTAIN</b> .....	<b>41</b>
<b>SHORTNIN' BREAD</b> .....	<b>42</b>
<b>SHORTNIN' BREAD</b> .....	<b>43</b>
<b>LEVEL 1 – 3A SUMMARY</b> .....	<b>44</b>
<b>SCALES AND CHORDS</b> .....	<b>50</b>

# LAVENDER'S BLUE

(♩ = 85)

**RIGHT HAND** - play the melody as written.

**LEFT HAND** – *Alberti bass*

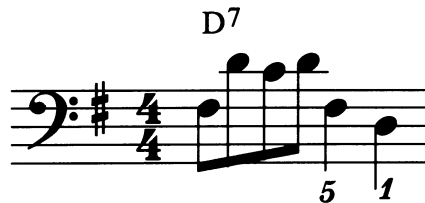
The Alberti bass is named after the composer, Domenico Alberti who used this bass in many of his compositions. It was also used by Mozart, Haydn and Beethoven. Play the bottom note of the chord position, then the top note, then the middle note and finally the top note.

Lines 1 and 2 – play the Alberti bass close to middle C.



(LH – LINE 1)

Play measure 8 as written below, and then continue the Alberti bass one octave lower for the last two lines.



(LH – MEASURE 8)

**ENDING** – *I – I / rolled chord*

To play a rolled chord: start on the beat, play the lowest note of the chord and quickly add the next notes holding each down. The chord should be complete within one beat. A wavy line next to a chord indicates that it should be rolled.

This song is written in the key of G. It ends on a I chord. Create a I – I ending by playing an additional rolled I chord in measure 16.



(RH AND LH – MEASURE 16)

# LAVENDER'S BLUE

G C G

Lav - en - der's blue, dil - ly, dil - ly, lav - en - der's green.

C G D7

When I am king, dil - ly, dil - ly, you shall be queen.

G C G

Who told you so, dil - ly, dil - ly, who told you so?

C G D7 G

'Twas my own heart, dil - ly, dil - ly, that told me so.

# OVER THE RIVER AND THROUGH THE WOODS

(♩ = 70)

## CREATE YOUR OWN ARRANGEMENT

### INTRODUCTION

- Choose one of these introductions:
  - Rhythmic introduction: With your left hand, play two measures of the first chord (in the chord area) using the left hand pattern chosen below for the first two lines
  - Last two phrases: Looking at the words, find the last two phrases. Then play the last two phrases with your right hand as written.

### RIGHT HAND

- Play the melody as written.

### LEFT HAND

- Choose one of the following for the first two lines:
  - Play a short blocked chord (in the chord area) on the first and fourth beat of each measure.
  - Use a simplified stride pattern (in the chord area) on each measure, playing the lowest note of the chord on the first beat and the rest of the chord on the fourth beat. Hold each for three beats.
- Choose one of these basslines for the last two lines:
  - Play a root note (in the bass area) on every measure, holding each down through the measure.
  - Play a root note (in the bass area) on the first and fourth beat of each measure, holding each down for three beats.
- Note: Using low C instead of bass C will give you a better sounding bassline.

### ENDING

- After playing the song, play the following ending with your left hand in the bass area.



# OVER THE RIVER AND THROUGH THE WOODS

O - ver the riv - er and through the woods, to grand - fa - ther's house we go. The

horse knows the way to car - ry the sleigh, thru the white and drift - ed snow.

O - ver the riv - er and through the woods, oh how the wind does blow. It

stings the toes and bites the nose, as o - ver the ground we go