

TABLE OF CONTENTS

FIND THE KEYS	3
PLAYING MIDDLE C	4
SAY AND PLAY SHEET #1 – MIDDLE C AND TREBLE D	5
SAY AND PLAY SHEET #2 – TREBLE CLEF – ADD E	6
SAY AND PLAY SHEET #3 – BASS CLEF – MIDDLE C AND BASS A	7
SAY AND PLAY SHEET #4 – TREBLE AND BASS	8
SAY AND PLAY SHEET #5 – BASS CLEF – ADD B	9
SAY AND PLAY SHEET #6 – TREBLE AND BASS	10
SAY AND PLAY SHEET #7 – BASS CLEF – ADD G	11
SAY AND PLAY SHEET #8 – TREBLE AND BASS	12
SAY AND PLAY SHEET #9 – TREBLE CLEF – ADD F	13
SAY AND PLAY SHEET #10 – TREBLE AND BASS	14
SAY AND PLAY SHEET #11 – TREBLE CLEF – ADD G	15
SAY AND PLAY SHEET #12 – TREBLE AND BASS	16
SAY AND PLAY SHEET #13 – BASS CLEF – ADD F	17
SAY AND PLAY SHEET #14 – TREBLE AND BASS	18
FIND THE KEYS	19
SAY AND PLAY SHEET #15 – BASS CLEF – ADD BASS C	20
SAY AND PLAY SHEET #16 – BASS CLEF – ADD D	21
SAY AND PLAY SHEET #17 – BASS CLEF – ADD E	22
SAY AND PLAY SHEET #18 – TREBLE AND BASS	23
SAY AND PLAY SHEET #19 – TREBLE AND BASS	24
SAY AND PLAY PRACTICE SHEETS	25
BASS CLEF – NOTE NAMES	44
TREBLE CLEF – NOTE NAMES	45

FIND THE KEYS

Using the different areas of the keyboard and going across the page,
locate the keys as fast as you can using only one hand (right or left).
Target Goal = 30 seconds

LOW

MIDDLE

HIGH

C

F

B

E

G

D

A

F

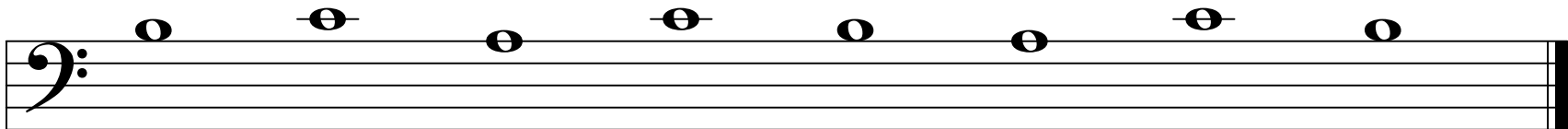
C

SAY AND PLAY SHEET #5 - Target Goal = 20 seconds
BASS CLEF - ADD B
(Practice Sheet - page 29)

Say _____ seconds Play _____ seconds



LH - 1



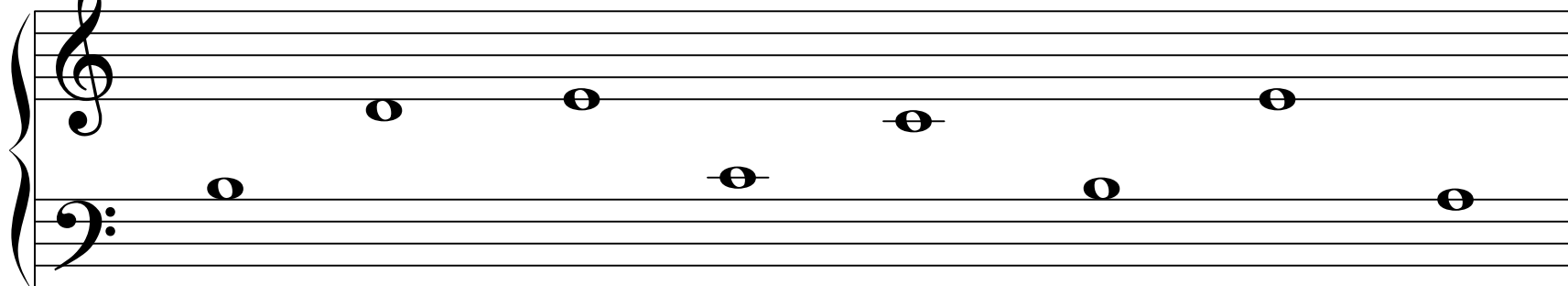
SAY AND PLAY SHEET #6 - Target Goal = 20 seconds

TREBLE AND BASS

(Practice Sheet - page 30)

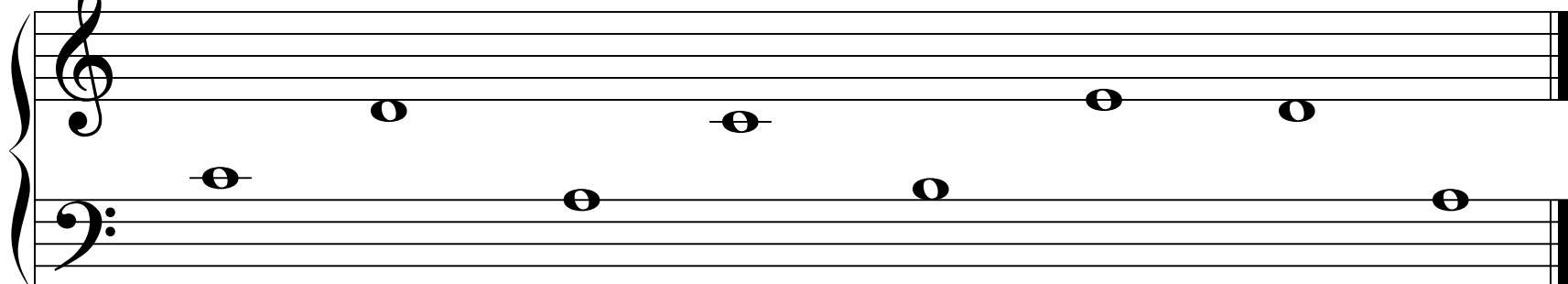
Say _____ seconds Play _____ seconds

RH - 2



LH - 2

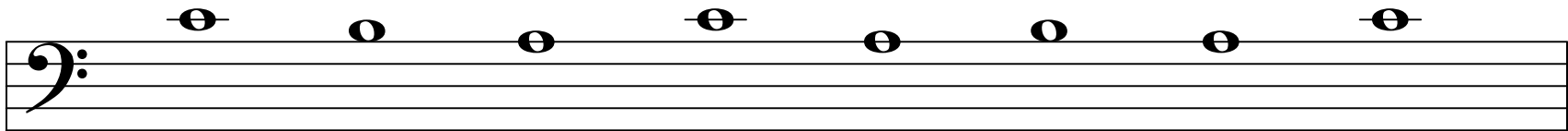
Detailed description: This block contains the first musical exercise. It consists of two staves, Treble Clef (RH) and Bass Clef (LH), both in 2/4 time. The RH staff contains four quarter notes: G4, A4, B4, and C5. The LH staff contains four quarter notes: G3, F3, E3, and D3. The label 'RH - 2' is positioned above the treble staff, and 'LH - 2' is positioned below the bass staff.



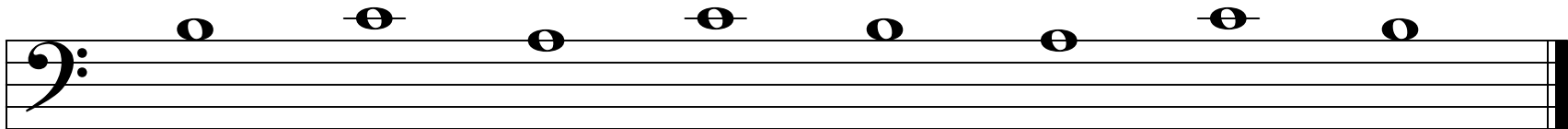
Detailed description: This block contains the second musical exercise, which is a mirror image of the first. The RH staff contains four quarter notes: C5, B4, A4, and G4. The LH staff contains four quarter notes: D3, E3, F3, and G3. The staves are identical in structure to the first exercise but with the notes reversed.

SAY AND PLAY SHEET #5 - Practice Sheet

BASS CLEF - ADD B



C B A C A B A C



B C A C B A C B

SAY AND PLAY SHEET #6 - Practice Sheet

TREBLE AND BASS

A musical staff with a treble clef on the top line and a bass clef on the bottom line. The notes are: Treble clef: D4, E4, C4, C4, E4, A4. Bass clef: B3, C4, B3, E4, A4. The notes are labeled with letters B, D, E, C, C, B, E, A below the staff.

B D E C C B E A

A musical staff with a treble clef on the top line and a bass clef on the bottom line. The notes are: Treble clef: D4, C4, E4, D4. Bass clef: C3, A3, B3, E4, A4. The notes are labeled with letters C, D, A, C, B, E, D, A below the staff.

C D A C B E D A