

TABLE OF CONTENTS

SAY AND PLAY SHEET #1 – RH – MIDDLE C POSITION, LH – BASS C POSITION	3
SAY AND PLAY SHEET #2 – TREBLE CLEF – ADD E, F AND G	4
SAY AND PLAY SHEET #3 – RH – TREBLE C POSITION, LH – BASS C POSITION	5
SAY AND PLAY SHEET #4 – RH – TREBLE G POSITION, LH – MIDDLE G POSITION ...	6
SAY AND PLAY SHEET #5 – RH – TREBLE G POSITION, LH – BASS G POSITION	7
SAY AND PLAY SHEET #6 – RH – TREBLE C POSITION, LH – BASS C POSITION	8
SAY AND PLAY SHEET #7 – RH – MIDDLE C POSITION, LH – BASS C POSITION	9
SAY AND PLAY SHEET #8 – TREBLE CLEF – SPACES	10
SAY AND PLAY SHEET #9 – TREBLE CLEF - LINES	11
SAY AND PLAY SHEET #10 – RH – MIDDLE C POSITION, LH – MIDDLE C POSITION	12
SAY AND PLAY SHEET #11 – RH – MIDDLE C POSITION, LH – BASS C POSITION	13
SAY AND PLAY SHEET #12 – TREBLE AND BASS	14
SAY AND PLAY SHEET #13 – RH – TREBLE G POSITION, LH – MIDDLE G POSITION	15
SAY AND PLAY SHEET #14 – RH – TREBLE G POSITION, LH – MIDDLE G POSITION	16
SAY AND PLAY SHEET #15 – RH – TREBLE G POSITION, LH – BASS G POSITION ...	17
SAY AND PLAY SHEET #16 – RH – TREBLE C POSITION, LH – MIDDLE C POSITION	18
SAY AND PLAY SHEET #17 – D POSITION	19
SAY AND PLAY SHEET #18 – RH – A POSITION, LH – BASS A POSITION	20
SAY AND PLAY SHEET #19 – RH – TREBLE G POSITION, LH – BASS G POSITION ..	21
SAY AND PLAY SHEET #20 – D POSITION	22
FIND THE KEYS	23
PRACTICE SHEETS	24
BASS CLEF – NOTES NAMES	44
TREBLE CLEF – NOTES NAMES	45

SAY AND PLAY SHEET #1 - Target Goal = 15 seconds

RH - MIDDLE C POSITION, LH - BASS C POSITION

(Practice Sheet - page 24)

Say _____ seconds Play _____ seconds

Treble Clef: lines and spaces _____
Bass Clef: lines and spaces _____

RH - 2

LH - 5

SAY AND PLAY SHEET #9 - Target Goal = 15 seconds

TREBLE CLEF - LINES

(Practice Sheet - page 32)

Say _____ seconds Play _____ seconds

Treble Clef: lines and spaces _____

Musical staff with treble clef. The staff contains seven notes: G4 (line 1), A4 (space 1), B4 (line 2), C5 (space 2), D5 (line 3), E5 (space 3), and F5 (line 4). The label "RH - 1" is positioned above the staff, and "LH - 3" is positioned below the staff.

Musical staff with treble clef. The staff contains seven notes: G4 (line 1), A4 (space 1), B4 (line 2), C5 (space 2), D5 (line 3), E5 (space 3), and F5 (line 4). This staff is identical to the one above.

SAY AND PLAY SHEET #17 - Target Goal = 15 seconds

D POSITION

(Practice Sheet - page 40)

Say _____ seconds Play _____ seconds

Treble Clef: lines and spaces _____
Bass Clef: lines and spaces _____

RH - 3

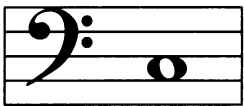
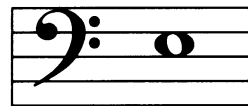
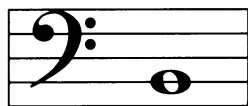
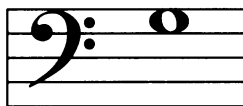
LH - 5

RH - 3

LH - 5

FIND THE KEYS

Locate the keys as fast as you can going across the page.
Use your right hand for all the treble clef notes and your left hand for all the bass clef notes .
Target Goal = 30 seconds



SAY AND PLAY SHEET #17 - Practice Sheet

D POSITION

The first line of musical notation consists of two staves. The treble clef staff contains notes F# (first space), D (second space), D (second space), A (third space), A (third space), E (third space), F# (first space), and G (first space). The bass clef staff contains notes D (second space), A (third space), and F# (first space). The notes are arranged in a sequence that corresponds to the labels below.

F# D D A A E F# G

The second line of musical notation consists of two staves. The treble clef staff contains notes A (second space), F# (first space), D (second space), and G (second space). The bass clef staff contains notes E (second space), G (second space), D (second space), D (second space), G (second space), and F# (first space). The notes are arranged in a sequence that corresponds to the labels below.

A E F# G D D G F#