

TABLE OF CONTENTS

LESSON 1: STEMS AND DOTS	3
LESSON 2: LEGATO AND STACCATO	7
LESSON 3: TREBLE CLEF SPACE NOTES: F – A – C – E	11
LESSON 4: BASS C, MIDDLE C AND TREBLE C	13
LESSON 5: TREBLE CLEF NOTES: TREBLE C – D – E – F – G	15
LESSON 6: INTERVALS	19
LESSON 7: HALF AND WHOLE RESTS	23
LESSON 8: HALF STEPS, SHARPS AND FLATS	26
LESSON 9: TONIC AND DOMINANT IN C POSITION	30
LESSON 10: THE I CHORD IN C POSITION	31
LESSON 11: THE V7 CHORD IN C POSITION	33
LESSON 12: BASS G, MIDDLE G AND TREBLE G	35
LESSON 13: BASS CLEF NOTES: G – A – B AND D ABOVE MIDDLE C	37
LESSON 14: TONIC AND DOMINANT IN G POSITION	39
LESSON 15: THE I CHORD IN G POSITION	40
LESSON 16: THE V7 CHORD IN G POSITION	41
LESSON 17: REVIEW OF C AND G POSITIONS	44
LESSON 18: OTHER THINGS TO KNOW	45
LESSON 19: NOTE REVIEW	49
PRIMER – LEVEL 1 SUMMARY	52

LESSON 1: STEMS AND DOTS

Notes below line 3 have stems that go up on the right side of the note head.
Notes on or above line 3 have stems that go down on the left side of the note head.



Add up stems to turn the following whole notes into half notes.



Add down stems to turn the following whole notes into half notes.



Do the stems go up or down? Write U for up and D for down.

_____ note on space 4

_____ treble clef middle C

_____ note on line 2

_____ bass clef middle C

_____ note on line 5

_____ note on line 3

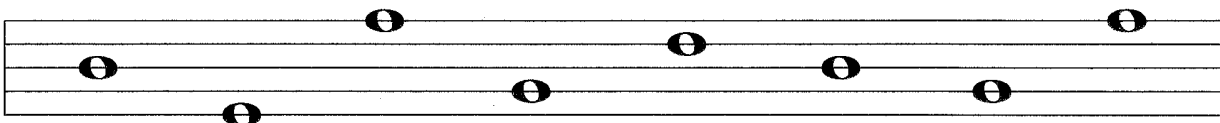
_____ note on space 1

_____ note on space 3

A line note will have a stem that goes through three additional lines and ends in the space. When the stem goes off the staff, estimate where the next line would be.



Add stems to turn the following whole notes into half notes by adding stems to these line notes.



LESSON 2: LEGATO AND STACCATO

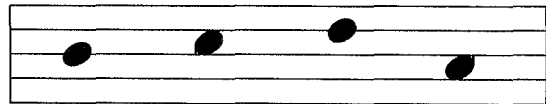
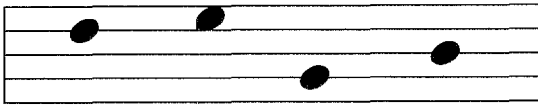
Legato is a style of playing notes without a break in the sound, lifting the finger playing a note at the same time as the next finger begins to play the new note. A slur is a curved line over or under a group of two or more notes which means to play legato. If two notes are slurred, they cannot be on the same line or space.



When most of the stems of a group of notes go down, the slur is usually over the notes.



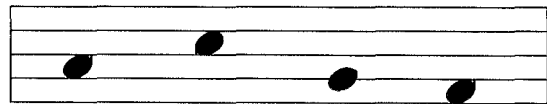
Add stems to the following notes. Then draw a slur over each group of notes.



When most of the stems of a group of notes go up, the slur is usually under the notes.



Add stems to the following notes. Then draw a slur under each group of notes.



True or False. Write T for true or F for False in the blank.

_____ When most of the stems of a group of notes go down, the slur will usually be over the notes.

_____ Two notes must be on the same line or space in order to be slurred.

DO YOU REMEMBER?

THE STAFF AND THE GRAND STAFF



Write the number of each line on the lines of the staff.



Write the number of each space on the spaces of the staff.



Draw a whole note on the correct line or space.

space 2

line 4

space 4

line 3

line 1

space 3

space 1



Make two grand staves. Connect each group of two staves at the beginning and at the end with a bar line. Then add a brace at the beginning of each.

LESSON 3: TREBLE CLEF SPACE NOTES: F – A – C – E

The spaces on the treble clef staff from the bottom up spell F – A – C – E. The letters A – C – E are also in the word “space”. Remember the following - “the ace is in the spaces”.



Draw these space notes on the staff. Use whole notes.

A E F C E A C F



Draw a half note in the correct space. Then name the note in the blank.

space 3 space 4 space 2 space 1 space 4 space 3 space 1 space 2

name
of note ___ ___ ___ ___ ___ ___ ___



Write the letter names of the treble clef space notes F A C E on the correct keys on the keyboard.

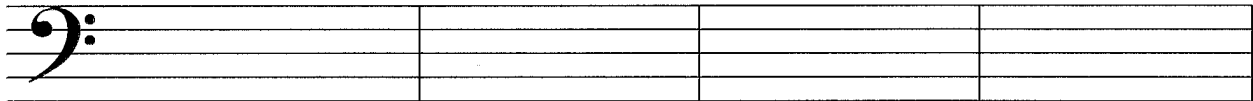
middle C
↓

LESSON 4: BASS C, MIDDLE C AND TREBLE C

Bass C is on space 2 of the bass staff.



Draw 4 bass C notes.



dotted half note

half note

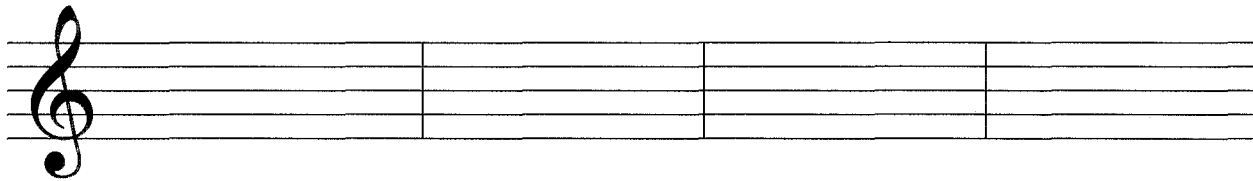
whole note

quarter note

Treble C is on space 3 of the treble staff.



Draw 4 treble C notes.



dotted half note

whole note

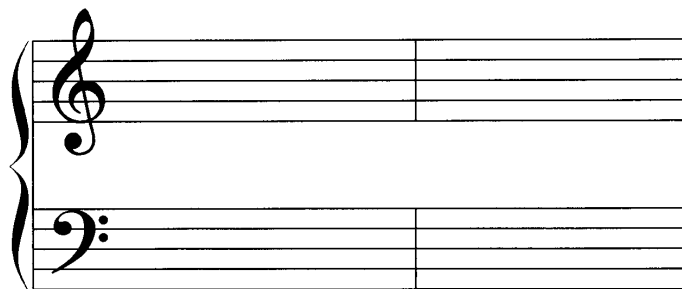
quarter note

half note

(Note that Bass C is 3 spaces down from the top of the bass staff and Treble C is 3 spaces up from the bottom of the treble staff.)



Draw bass C and treble C on the grand staff. Use whole notes.



bass C

treble C